



Stormwater Capture Parks Program

Stakeholder Briefing

June 25, 2020



Today's Objectives

- Brief Intros
- Local Water Supply Benefits
- Community Benefits
- Parks Program Overview
 - Alexandria Park
 - Valley Plaza Park North
 - Valley Plaza Park South
 - Whitsett Fields Park North
- Program Schedule
- Discussion

Local Water Supply Benefits

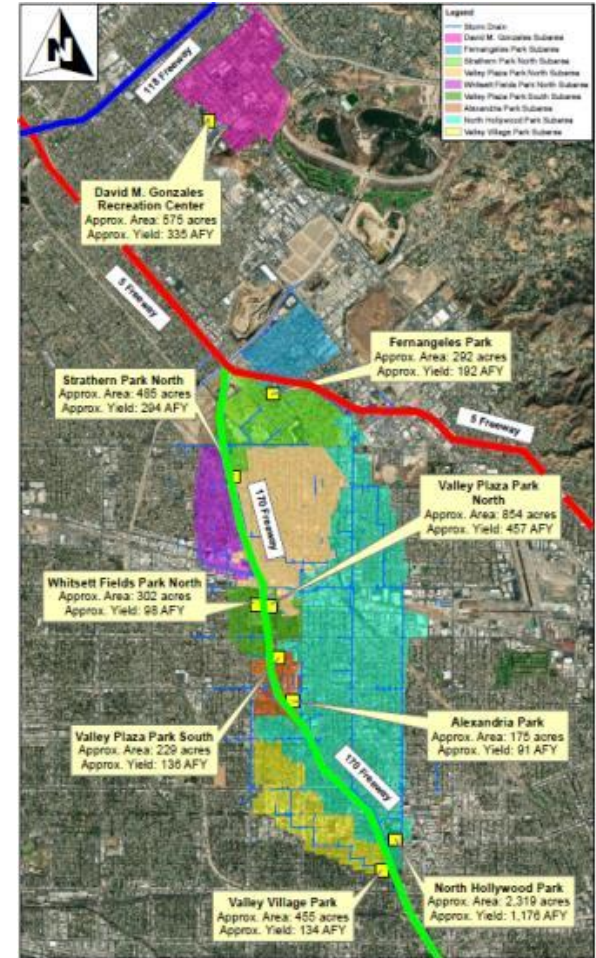
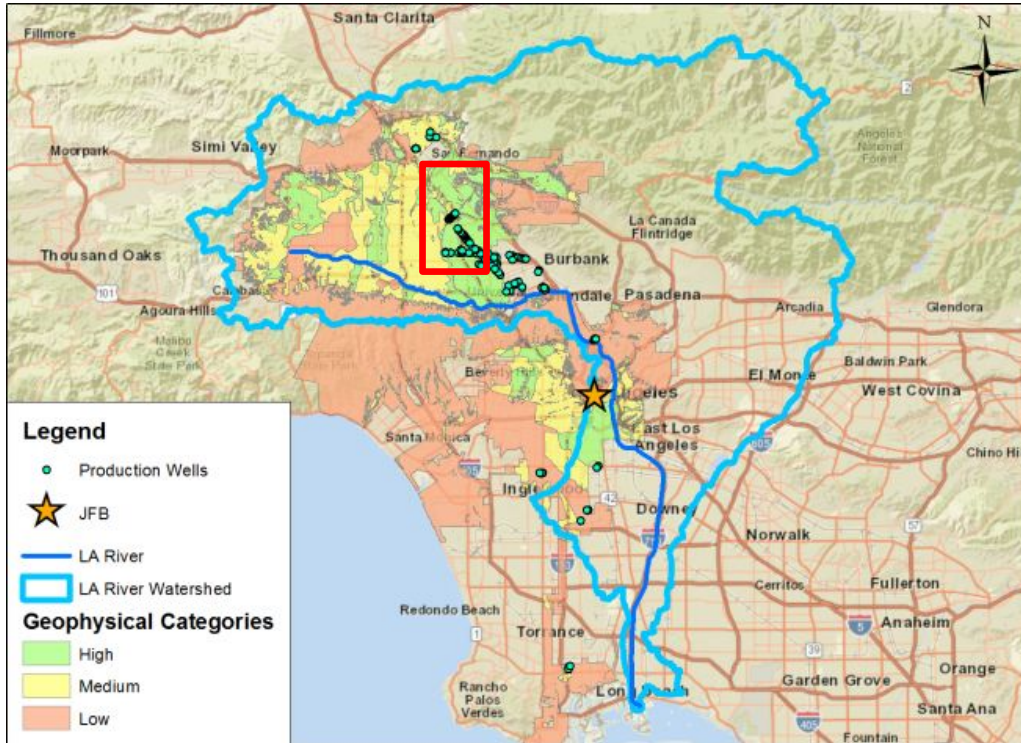
- L.A.'s Green New Deal
 - Implement multi-benefit stormwater capture projects to increase local water supply and improve local water quality
 - Source 70% of LA's water locally
 - Capture 150,000 Acre Feet Annually (AFY) of stormwater by 2035
 - Annual capture is equal to 49,000,000,000 gallons, which can supply 450,000 single-family households annually
 - Deliver Environmental Justice & Social Equity

Community Benefits

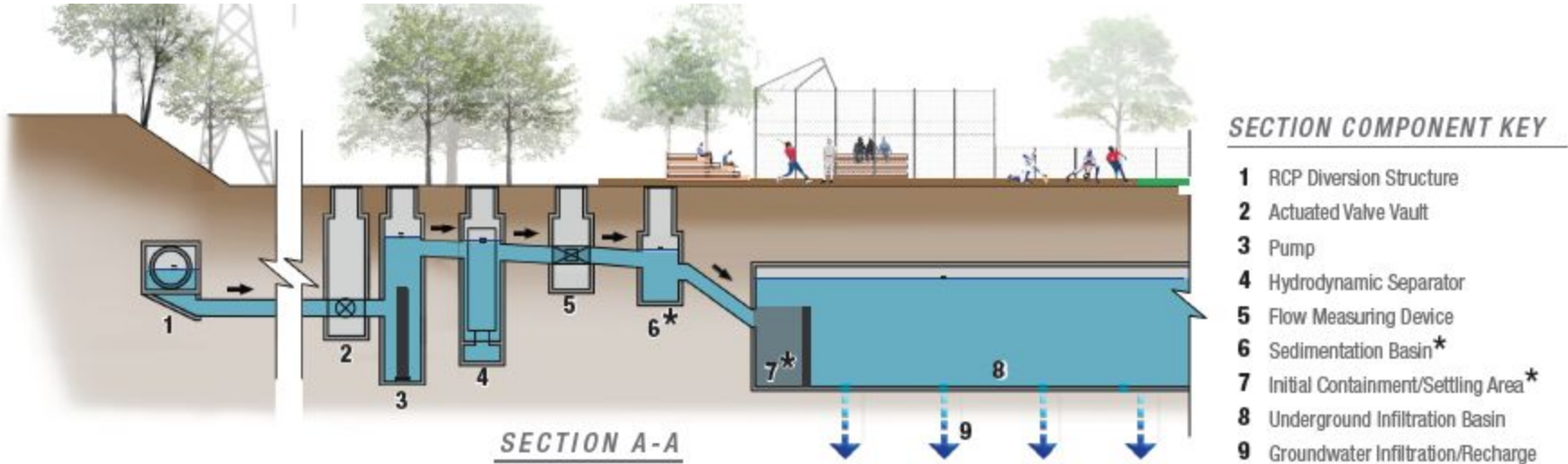
- Safe and Clean Communities
 - Mitigate localized flooding
- Environmental Education & Signage
 - Watershed health and awareness
- Expand Park Infrastructure
 - Improved sports fields and playgrounds
- Job Creation
 - ~750 jobs



Parks Program Locations



Typical Program X-Section



Broadway Neighborhood Greenway *Los Angeles, CA*



Albion Riverside Park *Los Angeles, CA*



Alexandria Park

Approximate Area: 175 Acres

Approximate Yield: 91 AFY



- New walking paths
- New irrigation
- New picnic benches
- Replace sod

Valley Plaza Park North

Approximate Area: 854 Acres

Approximate Yield: 457 AFY



- Replace trail paths
- Replace outdoor fitness equipment
- Replace irrigation system
- Replace sod

Valley Plaza Park South

Approximate Area: 229 Acres

Approximate Yield: 136 AFY



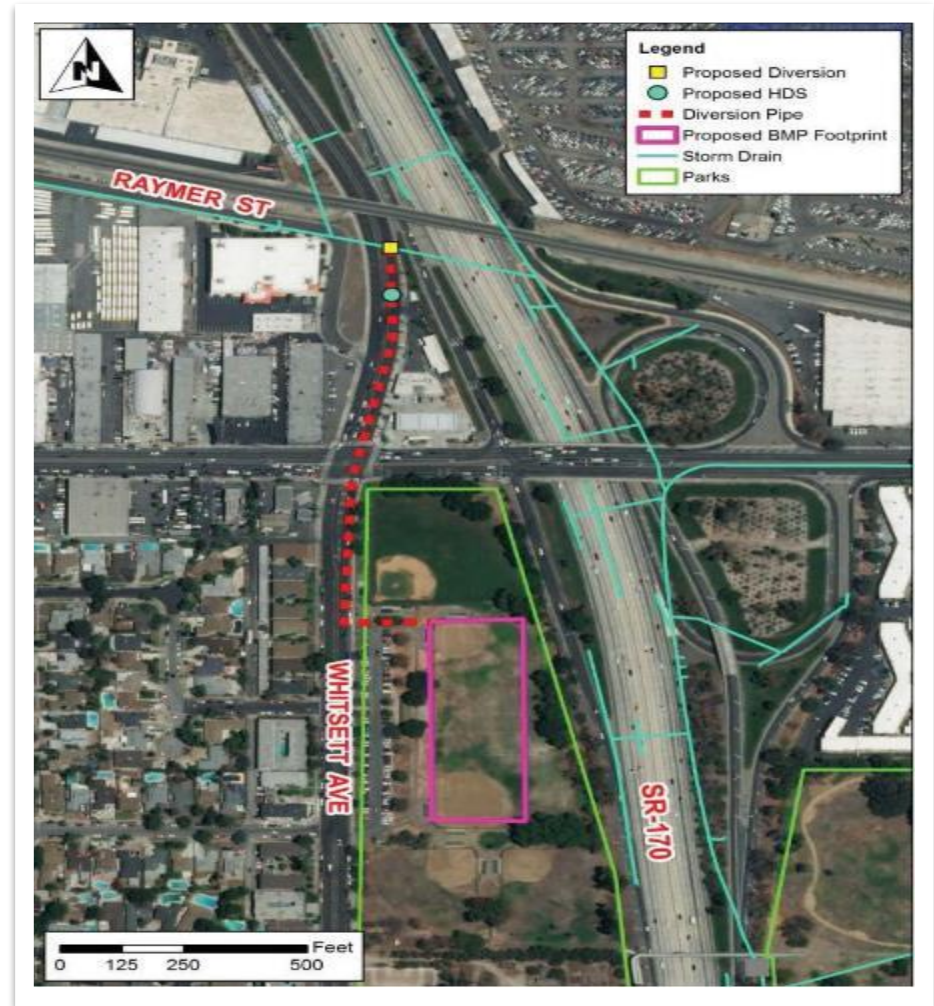
- Replace trail paths
- Replace sod
- Replace irrigation system

Whitsett Fields Park North

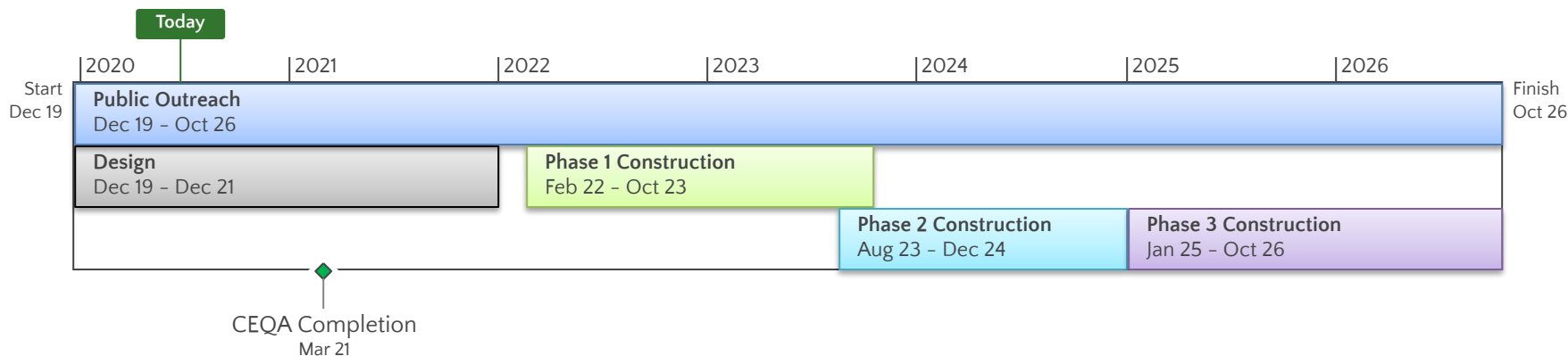
Approximate Area: 302 Acres

Approximate Yield: 98 AFY

- Improve two baseball fields
- Replace sports lighting
- Replace irrigation system



Program Schedule



Preliminary Construction Phasing*

Phase 1: Valley Village, Strathern & Fernangeles

Phase 2: D. M. Gonzales, **Valley Plaza No.** & North Hollywood Part 1

Phase 3: No. Hollywood Part 2, **Valley Plaza So., Alexandria & Whitsett**

*Construction schedules will be carefully managed and rolled out sequentially, as funding becomes available, to reduce impacts to the community.

Discussion